

VEZOS

ROADMASTER FRAME A



Pickup Truck-Mounted Road Marking Kits





THE FIRST-EVER ROAD MARKING KIT FOR PICKUP TRUCK BEDS

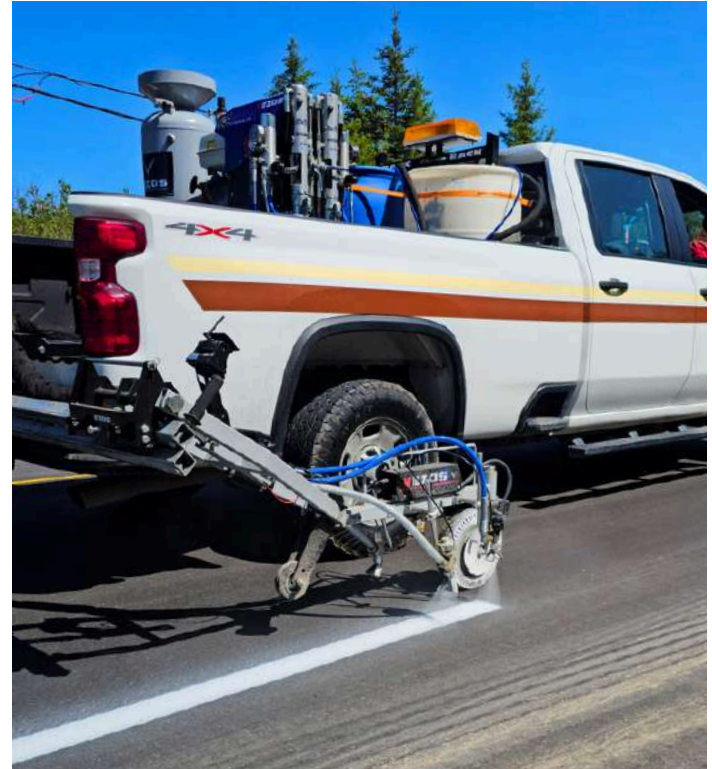
ROADMASTER A2.5 & A3.5 are the latest innovations from VEZOS — the first-ever compact line striping kits designed to mount directly on a standard pickup truck bed, van, or flatbed vehicle.

Whether you're a startup contractor or an established paving business, these systems offer full professional-grade striping power in a mobile, cost-effective package.

TAKE CONTROL OF YOUR ROAD MARKING WORK

From temporary striping after paving to small-town county roads, private roads and event lanes — the A2.5 & A3.5 are engineered to go where large machines can't. Now, you don't need to outsource or overinvest — just mount up and start striping!





WHY KEEP PAYING OTHERS FOR WHAT YOU CAN DO YOURSELF?

You just finished paving a flawless stretch of road — but now you're stuck waiting (and paying) for a road marking company to come lay temporary lines...

With the **ROADMASTER FRAME A Series**, those days are over. Mount this compact, powerful striping unit on a standard pickup and start striping your own roads — right after paving!

MADE FOR PAVERS. BUILT BY VEZOS.

✓ Mounts on Any Pickup Truck

Compact and lightweight — no need for a dedicated vehicle or trailer.

✓ Stripe Instantly After Paving

Apply temporary lines on the spot.

No waiting, no delays, no subcontractors.

✓ Save Big on Every Project

Cut costs by eliminating third-party striping crews for both temporary and some final markings.

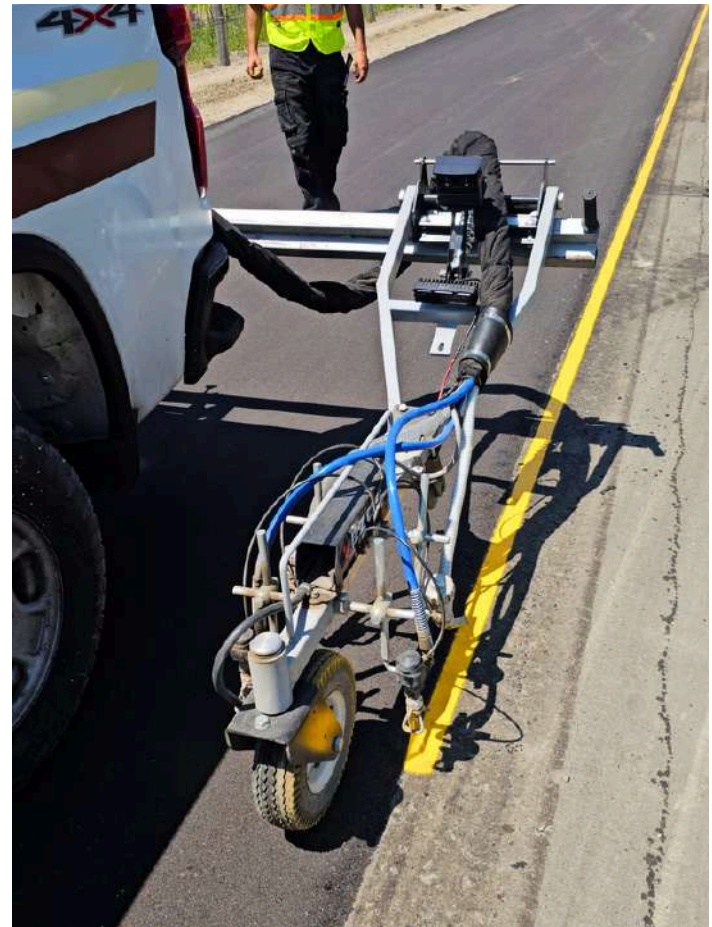
✓ One-Stop Service = More Contracts

Offer full paving + striping packages to municipalities, counties, or commercial clients.

✓ Fast ROI

Affordable investment. Pays itself off with just a few jobs.





Do More Than Just Roads

- Temporary lane markings after paving
- County and township roads
- Bike lanes and walking paths
- Private developments
- Emergency or night-time jobs

Your Crew, Your Schedule

- Simple operation (one-man-job)
- Stripe when you want, not when a subcontractor is available
- Comply with DOT and county striping requirements immediately

Perfect for:

- ✓ Asphalt Paving Contractors
- ✓ Municipal & County Road Projects
- ✓ Private Road Projects
- ✓ Companies Looking to Expand Services

ROADMASTER 2.5 (HYDREX 70)

- 2.5 gpm max delivery

ROADMASTER 3.5 (HYDREX 230)

- 4.0 gpm max delivery

Pressurized Glass Bead System

- 330 lbs. capacity
- Pop-up valve

Guidance System

- HD camera
- In-cabin monitoring system
- Front mounted pointer

*Re-striping pointer and HD camera/monitor combo enable operators to make quick adjustments for a flawless finish — **making road marking a one-man-job!***



ROADMASTER 2.5 Line Striping Kit

- 1-2 HYDREX 70 hydraulic fully chromed piston paint pump | 2.5 gpm (x2) @ 2900 psi
- Single or Double Color
- HD large hydraulic oil cooler
- TCS system cooling technology
- 9.0 HP HONDA GX270 engine

Glass Bead System

- 1 steel pressure bead tank 330 lbs capacity

Bracket

- Single retractable & foldable arm bracket

Gun configuration:

- Electro-pneumatic paint gun actuator
- 2-3 manual (automatic option available) airless paint guns + 2-3 glass bead triggers
- Manual paint | stencil kit (50ft hose, manual airless gun, reel)

Guidance System

- 1 Re-striping pointer

ROADMASTER 3.5 Line Striping Kit

- 1-2 HYDREX 230 hydraulic fully chromed piston paint pump | 4.0 gpm @ 2530 psi
- Single or Double Color
- HD large hydraulic oil cooler
- TCS system cooling technology
- 13.0 HP HONDA GX390 engine

Glass Bead System

- 1 steel pressure bead tank 330 lbs capacity

Bracket

- Single retractable & foldable arm bracket

Gun configuration:

- Electro-pneumatic paint gun actuator
- 2-3 automatic airless paint guns + 2-3 glass bead triggers
- Manual paint | stencil kit (50ft hose, manual airless gun, reel)

Guidance System

- 1 Re-striping pointer

ROADMASTER A 2.5 TRUCK-MOUNTED KIT

PRESSURIZED BEAD SYSTEM
with safety pop-up valve

TCS COOLING TECHNOLOGY
insures correct oil flow &
temperature of the entire system

POWERFUL ENGINE
9.0 HP HONDA GX 270

STENCIL KIT
manual V5 gun & hose

HD AIR COMPRESSOR
4 gal large accumulation tank

FORKLIFT SLOTS
multiple positions

HYDREX 70 PISTON PUMPS
single or double pump
built-in filter

AIRLESS PAINT GUNS
electro-pneumatic actuators

FULL FLOW HYDRAULIC COOLER
severe work usage

CUSTOM SPRING SYSTEM
shock absorbance, line
stability

FULLY RETRACTABLE BRACKET
Easy setup - convenient
for transportation



ROADMASTER A 3.5 TRUCK-MOUNTED KIT

PRESSURIZED BEAD SYSTEM
with safety pop-up valve

RETRACTABLE BRACKET
multiple positioning

HYDREX 230 PISTON PUMPS
single or double pump
built-in filter

AIRLESS PAINT GUNS
electro-pneumatic actuators

BUILT IN FILTER
with pressure gauge

CUSTOM SPRING SYSTEM
shock absorbance, line stability

FORKLIFT SLOTS
multiple positions

HD AIR COMPRESSOR
4 gal large accumulation tank





PRESSURIZED GLASS BEAD SYSTEM

The ROADMASTER FRAME A Series features a pressurized glass bead system with a 330 lbs steel pressure bead tank, equipped with a pop-up valve for increased safety. Now you can tackle even the toughest marking jobs with confidence, knowing you have the capacity and precision to get the job done efficiently and effectively.

- ✓ Steel tank
- ✓ Pop-up valve for increased safety
- ✓ 330lbs (150kg/100lt) glass bead capacity
- ✓ Removable loading funnel (no tools required)

HYDREX 70 - 230 PISTON PUMPS

Built to last, HYDREX pumps boast a heavy-duty design that ensures a long working life, even in demanding applications. Their long stroke and increased suction power make them perfect for handling high-viscosity materials and extended operation hours. Whether you're tackling tough projects or working on a daily basis, HYDREX pumps are the reliable choice for your road marking needs.

- ✓ RM 2.5 (HYDREX 70) | 9.5 lit/m - 2.5 gpm fluid flow (max)
- ✓ RM 3.5 (HYDREX 230) | 15 lit/m - 4.0 gpm fluid flow (max)



HD CAMERA AND MONITOR KIT

VEZOS re-striping pointer and HD camera/monitor combo provides real-time feedback for a flawless finish every time. With manual and automatic operation options, you have flexibility to tackle any project with ease - customize control for complex projects in manual mode or optimize the process for high-volume production runs in automatic mode.

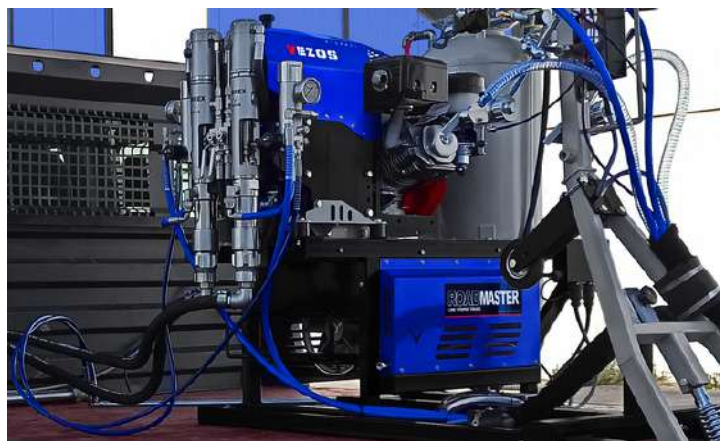
- ✓ Re-striping pointer
- ✓ HD Camera and monitor kit
- ✓ Skip-Line Controller (automatic operation)



TCS COOLING TECHNOLOGY

A full flow large hydraulic cooler is installed on every VEZOS line striper ensuring correct full flow & temperature of the entire system. Unlike other designs in the market, VEZOS entire flow of hydraulic oil goes through the large HD hydraulic cooler with VEZOS T.C.S technology, making it possible for operators to work under any severe usage.

- ✓ Non-stop road marking
- ✓ Superior cooling performance
- ✓ Reliable and durable operation



TECHNICAL SPECIFICATIONS & PURCHASE OPTIONS

MODEL	ROADMASTER A2.5	ROADMASTER A2.5	ROADMASTER A2.5
	TRUCK - MOUNTED	TRUCK - MOUNTED	TRUCK - MOUNTED
Material Delivery (max) gpm	2.5	2.5	2.5
Material Delivery (max) lpm	9.5	9.5	9.5
Working Pressure (max) psi	2900	2900	2900
Working Pressure (max) bar	200	200	200
Type	Palletized	Palletized	Palletized
Engine	HONDA 9.0 HP	HONDA 9.0 HP	HONDA 9.0 HP
Engine Type - Engine Start	GX270 - Manual	GX270 - Manual	GX270 - Manual
Pump	HYDREX 70	HYDREX 70	HYDREX 70 (x2)
Pump Size	4.27 cu.in.	4.27 cu.in.	4.27 cu.in.
Color - Pump	1 Color	1 Color	2 Color
Arm Bracket	STD/HD	STD/HD	STD/HD
Gun Setup	2	2	2
System - Operation	Manual	Automatic	Automatic
Dimensions (striper) in	51x23.6x48.4(h)	51x23.6x48.4(h)	51x23.6x48.4(h)
Dimensions (striper) cm	130x60x123(h)	130x60x123(h)	130x60x123(h)
Includes:			
Paint Gun	2	2	2
Guard	2	2	2
Tip	2	2	2
Glass Bead Gun	2	2	2
Pressurized Steel Glass Bead Tank	330 lbs	330 lbs	330 lbs
Manual Stencil Kit	Included	Included	Included
Controller 2 Channel	-	Included	Included
Pointer	Included	Included	Included
Chassis, beam & mount kit	Included	Included	Included
Glass Bead System Pressurized 330 lbs	Included	Included	Included
Camera - Monitor kit	Included	Included	Included
Part Number:	77.2017513	77.2017516	77.2017517
Optional Add-ons:			
Controller 5 Channel	-	-	-
Camera & Monitor Kit	-	-	-
Additional Paint Guns (up to 5 total)	-	23.9942005	23.9942005
Additional Bead Triggers (up to 5 total)	-	23.9087419	23.9087419
Glass Bead System Pressurized 660 lbs	-	-	-



product in photo: 77.2017517

TECHNICAL SPECIFICATIONS & PURCHASE OPTIONS

MODEL	ROADMASTER A3.5	ROADMASTER A3.5	ROADMASTER A3.5
	TRUCK - MOUNTED	TRUCK - MOUNTED	TRUCK - MOUNTED
Material Delivery (max) gpm	4.0	4.0	4.0
Material Delivery (max) lpm	15.0	15.0	15.0
Working Pressure (max) psi	2530	2530	2530
Working Pressure (max) bar	175	175	175
Type	Palletized	Palletized	Palletized
Engine	HONDA 13.0 HP	HONDA 13.0 HP	HONDA 13.0 HP
Engine Type - Engine Start	GX390 - Electric	GX390 - Electric	GX390 - Electric
Pump	HYDREX 230	HYDREX 230	HYDREX 230 (x2)
Pump Size	14.0 cu.in.	14.0 cu.in.	14.0 cu.in.
Color - Pump	1 Color	1 Color	2 Color
Arm Bracket	STD/HD	STD/HD	STD/HD
Gun Setup	2	2	2
System - Operation	Automatic	Automatic	Automatic
Dimensions (striper) in	55.2x23.6x48.4(h)	55.2x23.6x48.4(h)	55.2x23.6x48.4(h)
Dimensions (striper) cm	140x60x123(h)	140x60x123(h)	140x60x123(h)
Includes:			
Paint Gun	2	2	2
Guard	2	2	2
Tip	2	2	2
Glass Bead Gun	2	2	2
Pressurized Steel Glass Bead Tank	330 lbs	330 lbs	330 lbs
Manual Stencil Kit	Included	Included	Included
Controller 2 Channel	-	Included	Included
Pointer	Included	Included	Included
Glass Bead System Pressurized 330 lbs	Included	Included	Included
Camera - Monitor kit	Included	Included	Included
Part Number:	77.2017518	77.2017519	77.2017520
Optional Add-ons:			
Controller 5 Channel	77.5118102	77.5118102	77.5118102
Camera & Monitor Kit	Optional	-	-
Additional Paint Guns (up to 5 total)	23.9942005	23.9942005	23.9942005
Additional Bead Triggers (up to 5 total)	23.9087419	23.9087419	23.9087419
Glass Bead System Pressurized 660 lbs	23.9001416	23.9001416	23.9001416



product in photo: 77.2017518



ROADMASTER TRUCK MOUNTED KITS

